



INSULATED PIERCING CONNECTORS P3X/P4X FOR INSULATED OVERHEAD LINES AND LV ABC LINES, MAIN TO MAIN CONNECTION

KEY FEATURES

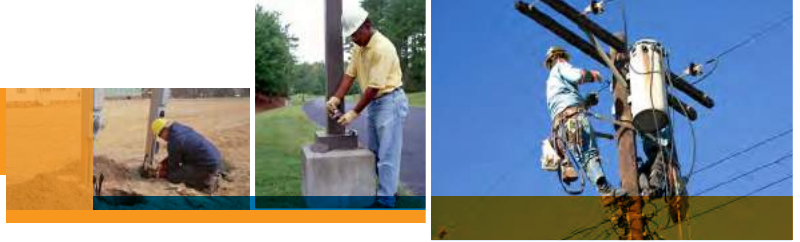
- Expanded wire range
- Accept copper conductor
- Waterproof
- End caps for taps and splices
- Single bolt application with ring washers for residual pressure
- Torque control nut for precise pressure on conductor and insulation
- Operating temperature -55°C to +55°C
- Installation temperature -20°C to +55°C
- Can be installed on energized main if tap is not under load

TE Connectivity's (TE) Insulated Piercing Connectors P3X/P4X's easy installation has been combined with excellent mechanical, electrical and environmental characteristics to provide a connector capable of termination aluminum or copper stranded conductors.

Tin plated copper blades (P3/P4) imbedded in moulded plastic and surrounded with a sealing compound insure electrical contact in low voltage overhead distribution networks. A single torque control nut draws the two halves of the connector together and shears off when the teeth have pierced the insulation and made contact with the conductor strands. It is not recommended to re-use IPC when removed.

Customers can count on consistent, high quality products, driven by TE's proven innovation and backed by our extraordinary customer support.

Insulated Piercing Connectors P3X/P4X



The mechanical strength of the connection is in accordance with the tensile requirements of NF C 33 020 while the electrical performance meets the test outlined in NF C 33 004. The dielectric and waterproof tests are in accordance with the rigid standard of NF C 33 020 and corrosion test per NF C 33 003 (French standards). The moulded end caps have been tested for dielectric strength and resist 6kV for one minute.

PRODUCT SELECTION INFORMATION

Designation	TCPN	Main Al / Cu		Tap Al/Cu		Characteristics		
		Min (mm ²)	Max (mm ²)	Min (mm ²)	Max (mm ²)	I Max (A)	Packaging	Weight (g)
P3X 95	1574150-1	25	95	25	95	350	50	158
P4X 120 D	1701730-1	25	120	25	120	550	25	332
P4X 150 D	1574182-1	50	150	50	150	550	25	342

te.com/energy

©2014 TE Connectivity Ltd. family of companies. All Rights Reserved. EPP-2264-10/14

TE Connectivity and TE connectivity (logo) are trademarks. Other logos, product and/or company names might be trademarks of their respective owners. While TE has made every reasonable effort to ensure the accuracy of the information in this brochure, TE does not guarantee that it is error-free, nor does TE make any other representation, warranty or guarantee that the information is accurate, correct, reliable or current. TE reserves the right to make any adjustments to the information contained herein at any time without notice. TE expressly disclaims all implied warranties regarding the information contained herein, including, but not limited to, any implied warranties of merchantability or fitness for a particular purpose. The dimensions in this catalog are for reference purposes only and are subject to change without notice. Specifications are subject to change without notice. Consult TE for the latest dimensions and design specifications.

FOR MORE INFORMATION: TE Technical Support Centers

USA:	+ 1 800 327 6996
France:	+ 33 380 583 200
UK:	+ 44 0870 870 7500
Germany:	+ 49 896 089 903
Spain:	+ 34 916 630 400
Benelux:	+ 32 16 351 731
Canada:	+ 1 (905) 475-6222
Mexico:	+ 52 (0) 55-1106-0800
Latin/S. America:	+ 54 (0) 11-4733-2200
China:	+ 86 (0) 400-820-6015